

Facilities Services Division
Asset Management Branch
2018-2019 Organization Chart
(6/6/18)

Asset Management Branch
1065001, 1065401, 1073101
2018-2019 Organization Chart
(6/6/18)

Aaron Bridgewater***/**
Director of Facilities
Planning and Development
(1073101)(30083842)
(NC=78) (CP=38)

Alix O'Brien***
Deputy Director
Planning and Development
(1073101)(30338456)
(NC=78)(CP=38)

Amanda Vaughn***
Program & Policy Dev Advisor,
Construction Programs
(1073101)(30404982)

Veronica Arellano***
Principal Administrative
Assistant
(1073101) (30105309)

Sally Sterling***
Senior Office Technician
(1073101)(30443931)

Vacant***
Senior Office Technician
(1073101)(30418329)

Planning & Design Mgmt
Vacant***
Facilities Asset
Development Director
(1073101)(30365141)
(NC=21) (CP=37)

SMS/MPD
Rena Perez***/**
Director
Master Planning &
Demographics
(1065401)(30105418)
(NC=14) (CP=0)

Real Estate
Albert Grazioli***
Facilities Asset
Development Director
(1065001)(30389632)
(NC=7) (CP=1)

Standards
Michael Maurizio***/**
Assistant Director
Design, Standards,
Specifications
(1073101)(30069163)
(NC=18) (CP=0)

Relocatable Housing Unit
Miguel Tovalin***
Relocatable Housing
Program Manager
(1073101)(30104637)
(NC12) (CP=0)

**Asset Management
Planning and Design Management**
1073101
2018-2019 Organization Chart
(6/6/18)

Vacant***
Facilities Asset Dev Director
(1073101)(30365141)
(NC=21)(CP=37)

L. Padilla***
Fac Dev Mgr
(1073101)(30356068)

J. Anderson***
Planning Advisor
CP

S. Valdovinos***
Sr. Administrative Asst
(1073101)(30312703)

L. Hubler***
Sr. Asset Dev Mgr
CP

R. Bharwani***
Facilities Services
Coordinator
(1073101)(30441318)

N. Arenas***
Engineering Aide
(1073101)(30377298)

V. Edwards
Asst Admin Analyst
(1073101)(30445320)

EAST REGION
J. Hawkinson***
Sr. FDM
(1073101)(30371909)

WEST REGION
S. Singletary***
Sr. FDM
(1073101)(30371911)

SOUTH REGION
I. Dahdul***
Sr. FDM
(1073101)(30371910)

NORTH REGION
J. Palacios***
Sr Project Dev Mgr
CP

T. Kim***
Fac Dev Mgr
(1073101)(30356069)

R. McCarley***
Sr Design Mgr
CP

G. Bou***
Project Dev Mgr
CP

M. Baig***
Fac Dev Mgr
(1073101)(30326524)

C.Sahara***
Design Mgr
CP

S. Berler***
Design Mgr
CP

G. Logan***
Design Mgr
CP

B. Ko***
Design Mgr
CP

S. Yiu***
Design Mgr
CP

T. Rogic***
Design Mgr
CP

Vacant***
Engineering Aide
(1073101)(30445323)

Vacant
Admin Intern I
(1073101)(30346806)

B. Hurwitz***
Project Dev Mgr
CP

K. Rossi***
Sr Design Mgr
CP

T. Spaeth***
Sr Design Mgr
CP

L. Ketterl***
Sr. Design Mgr
CP

G. Smith***
Design Mgr
CP

E. Amber***
Design Mgr
CP

Vacant**
Asst Fac Dev Mgr
(1073101)(30361901)

Vacant***
Engineering Aide
(1073101)(30445321)

Vacant
Admin Intern II
(1073101)(30420098)

D. Taylor***
Sr. Design Mgr
CP

E. Nishi***
Sr. Design Mgr
CP

R. Cano***
Project Dev Mgr
CP

N. Gillock***
Sr Design Mgr
CP

D. Dobson***
Sr. Project Mgr
CP

M. Raff***
Design Mgr
CP

L. Guthrie***
Asst Fac Dev Mgr
(1073101)(30361900)

S. Aquino***
Design Mgr
CP

R. Gruft***
Sr Design Mgr
CP

B. Woodson
Design Mgr
CP

Vacant***
Engineering Aide
(1073101)(30420098)

M. Suen***
Design Mgr
CP

M. Nehoraj***
Sr Project Dev Mgr
CP

M. Kashani ***
Fac Dev Mgr
(1073101)(30356067)

J. Collins ***
Fac Dev Mgr
(1073101)(30342203)

J. Zelles***
Asst Fac Dev Mgr
(1073101)(30361902)

J. Ellis***
Project Dev Mgr
CP

C. Hines***
Project Dev Mgr
CP

G. Attridge***
Project Dev Mgr
CP

P. Ku***
Sr Design Mgr
CP

E. Sacasa***
Design Mgr
CP

E. Zhao***
Design Mgr
CP

L. Cohen***
Design Mgr
CP

F. Zavaglia***
Design Mgr
CP

D. Lawrence***
Design Mgr
CP

Asset Management
School Management Services/MPD
 1065401, 1073101
 2018-2019 Organization Chart
 (6/6/18)

Rena Perez***/**
 Director
 Master Planning &
 Demographics
 (1065401)(30105418)
 (NC=14) (CP=0)

Wilma Escolano***
 Senior Administrative
 Asstistant
 (1065401)(30105409)

GIS & Planning
 Vincent Maffei***
 Masterplan Coordinator
 (1065401)(30105117)

Valerie Edwards***
 Chief Enrollment
 Analysis Coordinator
 (1065401)(30105410)

Vacant***
 Chief Boundary
 Coordinator
 (1065401)(30065519)

Gaspar Gorgora***/**
 GIS Specialist I
 (1065401)(30105414)

Mary Prichard***
 Demographic
 Research & Planning
 Analyst II
 (1065401)(30105405)

Jerome Velarde***
 GIS Specialist I
 (1065401)(30105342)

Mark Slothower***
 Demographic
 Research & Planning
 Analyst II
 (1065401)(30353812)

Joseph Faliti***
 GIS Specialist
 (1065401)(30105341)

Janis Buckingham****
 Demographic
 Research & Planning
 Analyst I
 (1065401)(30066976)

Jovanny Gomez***
 Engineering Aide
 (1073101)(30437603)

Theresa Saguros***
 Demographic
 Research & Planning
 Analyst I
 (1065401)(30353811)

Vacant***/**
 Demographic
 Research & Planning
 Analyst I
 (1065401)(30105415)

**Asset Management
Real Estate**
1065001, 1073101
2018-2019 Organization Chart
(6/6/18)

Albert Grazioli***
Facilities Asset Development
Director
(1065001)(30389632)
(NC=7) (CP=1)

Eileen Ma***
Real Estate Project Director
(1065001)(30352577)

Ronald Morris***
Principal Realty Agent
(1065001)(30428488)

Luis Ramirez***
Principal Realty Agent
(1065001)(30105312)

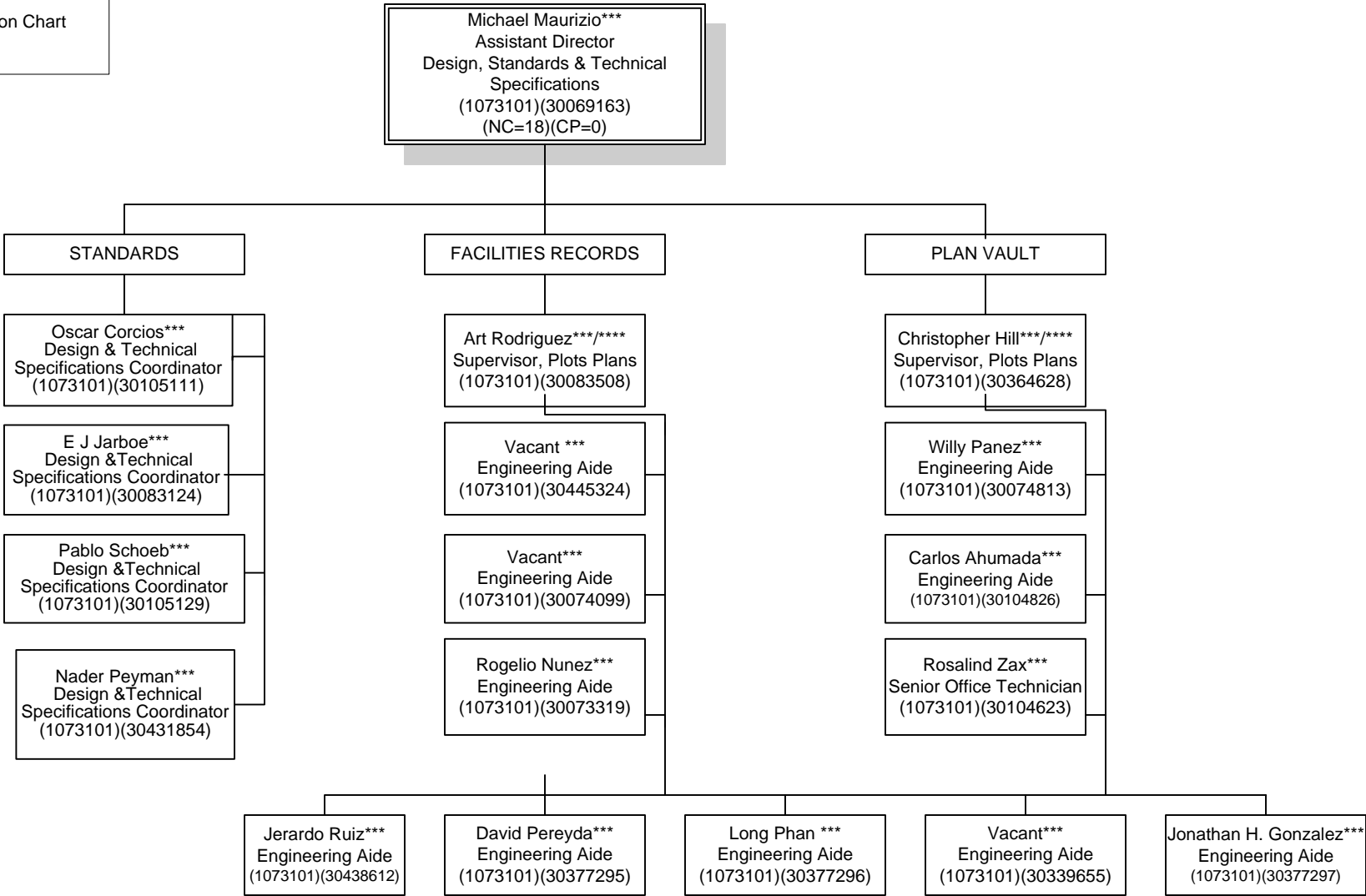
Vacant***
Facilities Development Manager
Charter School Dev
(1073101)(30322764)

Isela Lopez***
Facilities Partnership &
Development Manager
(1073101)(30339338)

Katy Szeto***
Facilities Partnership &
Development
Coordinator
(1073101)(30396958)

Pilar Hanson***
Contracts Coordinator
CP

**Asset Management
Standards Department**
1073101
2018-2019 Organization Chart
(6/6/18)



**Asset Management
Relocatable Housing Unit**
1073101
2018-2019 Organization Chart
(6/6/18)

